



# Class 1 Hedgehogs, EYFS- Autumn 1



We hope that you have all had a wonderful summer holiday and have had lots of fun with your family. We are so excited to be working with all our new families this academic year and ensuring your child is settle, happy and motivated to learn.

## Class 1, EYFS, Weekly Autumn 1 Timetable

### What will you need?

- \* A labelled water bottle.
- \* EYFS come in PE Kit on a Tuesday and a Wednesday.
- \*If we are lucky enough to have some hot days, please ensure your child comes to school with sun cream on and a sun hat. They may also bring sun cream into school if needed.
- \* Welly boots.
- \* Show and Tell - Monday.

### Who will be joining us?

Each day we will be joined by Mrs Watson in Class 1.

Every Wednesday afternoon Mrs Marjoram will be teaching Class 1 about Our World and Mr Buttery will be teaching PE.



EYFS & Year 1

	8:40 8:50	8:50-10:15 Session 1	10:15 10:30	10:30 10:45	10:45-12:00 Session 2	12:00 1:00	1:00 1:05	1:05-2:35 Session 3	2:20 2:35	2:35- 3:15
M	Registration	Phonics EYFS The Natural World KSI Maths	Collective worship	Playtime	EYFS Being Imaginative KSI Literacy	Lunchtime ERLCC / Book Club	Guided Reading	EYFS Maths & Literacy KSI Geography / Computing	Playtime	Show and Tell PSHCE
T	Registration	Phonics EYFS PE KSI Phonics	Nursery Tuesday	Playtime	EYFS Phonics KSI Literacy	Lunchtime ERLCC / Book Club	Guided Reading	EYFS Maths & Literacy KSI Maths	Playtime	PSHCE
W	Registration	Phonics EYFS Maths KSI Maths	Collective worship	Playtime	EYFS & KSI Literacy	Lunchtime ERLCC / Book Club	PE Mr Buttery	EYFS - The Natural World (UTW) KSI - Science Mrs Marjoram	Playtime	PSHCE
Th	Registration	Phonics EYFS & KSI Maths	Collective worship	Playtime	EYFS & KSI Literacy	Lunchtime ERLCC / Book Club	Guided Reading	EYFS & KSI RE	Playtime	Music
F	Registration	Phonics EYFS Creating with Materials KSI Maths	Collective worship	Playtime	EYFS Creating with Materials KSI Literacy	Lunchtime ERLCC / Book Club	Art	Playtime	Shining Assembly	

### How can you help at home?

**Reading -** Please encourage your child to tell a story from the pictures within their reading book. This should be for no longer than 5 minutes each evening. After reading, please record this in your child's planner. This could just be a 'well done' and the page your child will be on next.

**Phonics-** A phonics task will be given once a week linking to the sounds/words we are focusing on in class. You will also receive a pack to place your child's flashcards in as they receive a new set each week. Phonics homework and the flashcard pack will be given out each Friday and should be returned a week later.

**Homework book-** Your child will be provided with a "Homework Book". This half term, there will be a grid of tasks linking to the topic "Home Sweet Home" covering a range of curricular areas. Each week, your child should try to do one task from the grid and return it to school by the following Thursday to be marked. *Compulsory activities are highlighted in purple and should be handed in on the date specified.*

**Numbots and TT Rockstars -** Please encourage your child to go on Numbots and enjoy learning all about numbers. Your child will receive a password which will be in your child's planner.

Communication, Language and Literacy

**Baseline** - Observations of child-initiated activity and ability through enhanced play opportunities.

**Meaning to Marks** - Paintings and pictures.

**Rhyme** - Continuing rhyming strings.

**Labelling** - My house and village map.

**Story** - Stickman.

# Home Sweet Home



Bookshelf

Physical Development



**Baseline** - Observation of child-initiated activity and ability through enhanced provision play.

**Gross Motor Skills and Fine Motor Skills** -

Exploring the classroom indoors and outdoors.

Independence - dressing, undressing and use of toilets.

Hygiene - washing hands.

Safety - around the home and school.

Eating - understanding and eating a range of foods using cutlery.

Introduction to gymnastics and games.

Understanding the World

**Baseline** - Observation of child-initiated activity and ability through enhanced provision play.

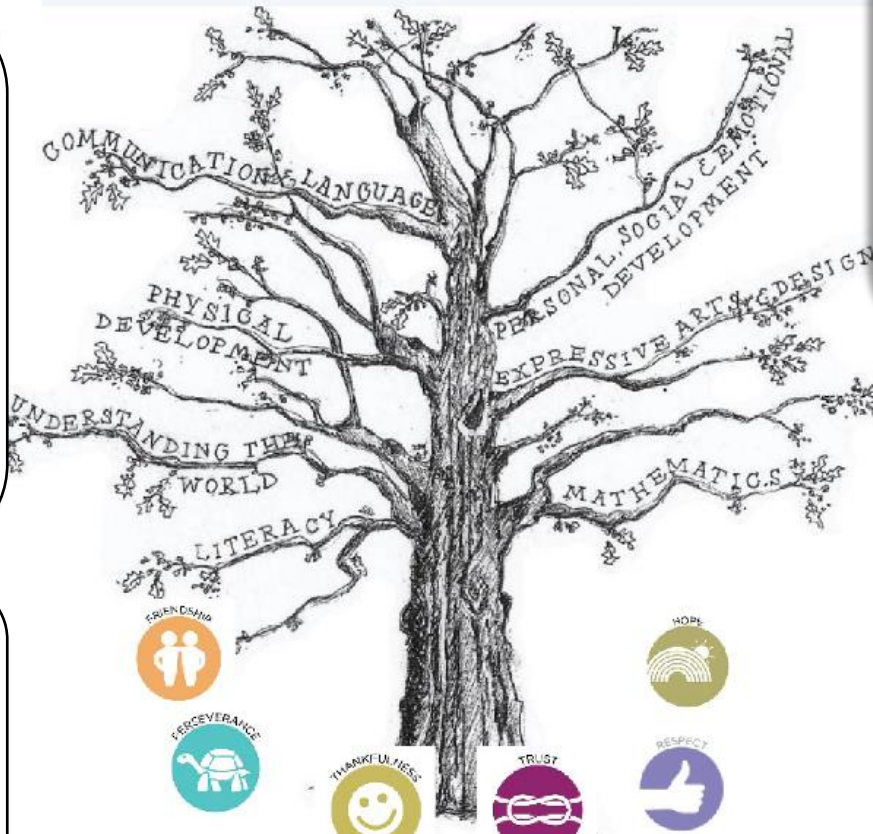
**People, Culture and Communities** - Role Play - Family celebrations.

**The Natural World** - Peepo - The Home and differing environments.

R.E

Being Special

Where do we belong?



Personal Social and Emotional Development



**Baseline** - Observation of child-initiated interactions.

**Building Relationships** - Circle Time - home, family and school friends.

**Managing Self** - The Colour Monster Starts School - Managing feelings through colour.

Expressive Arts and Design

**Baseline** - Observation of child-initiated interactions.

**Creating with Materials**

Mixing Colours - family

Joining - construction homes

Representation - clay, playdough and stick families.

**Being Imaginative and Expressive**

Role-play families, stories - The Three Bears.

Mathematics



**Baseline** - Observation of child-initiated activity and ability through enhanced play opportunities.

**Number** - Number stories - recognising numbers, counting, subitising, estimation, more, less, adding, taking away, sharing and doubling.

We will look at Number 1 and Number 2.

Super Start- Pillowcase Picnic dressed up.

Fabulous Finish- Village walk and visit to the shop.