

# Class 1 Hedgehogs, KS1 - Autumn 1



We hope that you have had a lovely summer holiday and are now ready for an exciting year together.



## Class 1, KS1, Weekly Autumn 1 Timetable

### Who will be joining us?

Each day we will be joined by Mrs Watson in Class 1.

Every Wednesday afternoon Mrs Marjoram will be teaching Class 1 about Our World and Mr Buttery will be teaching PE.



### What will you need?

- \* A labelled water bottle.
- \* Indoor and outdoor PE Kit on a Tuesday and a Wednesday.
- \* If we are lucky enough to have some hot days, please ensure your child comes to school with sun cream on and a sun hat. They may also bring sun cream into school if needed.
- \* Welly boots.
- \* Show and Tell - Monday.

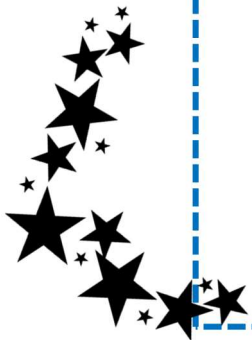


EYFS & Year 1

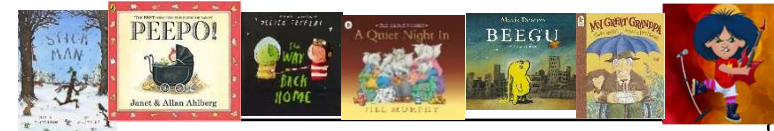
	8:40-8:50	8:50-10:15	10:15-10:30	10:30-10:45	10:45-12:00	12:00-1:00	1:00-1:05	1:05-2:35	2:35-2:50	2:50-3:15
		Session 1			Session 2			Session 3		
M	Registration	Phonics EYFS The Natural World KSI Maths	Collective worship	Playtime	EYFS Being Imaginative KSI Literacy	Lunchtime	ERIC/ Book Club	Guided Reading EYFS Maths & Literacy KSI Geography / Computing	Playtime	Show and Tell
T	Registration	Phonics EYFS PE KSI Phonics	Nearby Tuesday	Playtime	EYFS Phonics KSI Literacy	Lunchtime	ERIC/ Book Club	Guided Reading EYFS Maths & Literacy KSI Maths	Playtime	PSHE
W	Registration	Phonics EYFS Maths KSI Maths	Collective worship	Playtime	EYFS & KSI Literacy	Lunchtime	ERIC/ Book Club	PE Mr Buttery	EYFS - The Natural World (UTW) KSI - Science Mrs Marjoram	Music
Th	Registration	Phonics EYFS & KSI Maths	Collective worship	Playtime	EYFS & KSI Literacy	Lunchtime	ERIC/ Book Club	Guided Reading EYFS & KSI RE	Playtime	Music
F	Registration	Phonics EYFS Creating with Materials KSI Maths	Collective worship	Playtime	EYFS Creating with Materials KSI Literacy	Lunchtime	ERIC/ Book Club	Art	Playtime	Sharing Assembly

### How can you help at home?

- ❖ **Reading-** Please continue to read with your child for at least 5 minutes every day and record this in their planners.
- ❖ **Phonics-** A phonics task will be given once a week linking to the sounds/words we are focusing on in class. An additional sheet will also be provided, with a list of spellings linking to the phonics work to learn at home ready for a mini quiz in class. Phonics and spelling homework will be given every Friday and should be returned a week later.
- ❖ **Times Table Rockstars + Numbots-** Please continue to encourage your child to go on the following websites at home.
- ❖ **Homework book-** Your child will be provided with a "Homework Book". This half term, there will be a grid of tasks linking to the topic "Home Sweet Home" covering a range of curricular areas. Each week, your child should try to do one task from the grid and return it to school by the next Friday to be marked.



# Home Sweet Home



Bookshelf

Science



**Everyday Materials**

Looking at materials found in the house and school grounds. Discovering what they are made of and their properties.

Art & Design Technology:

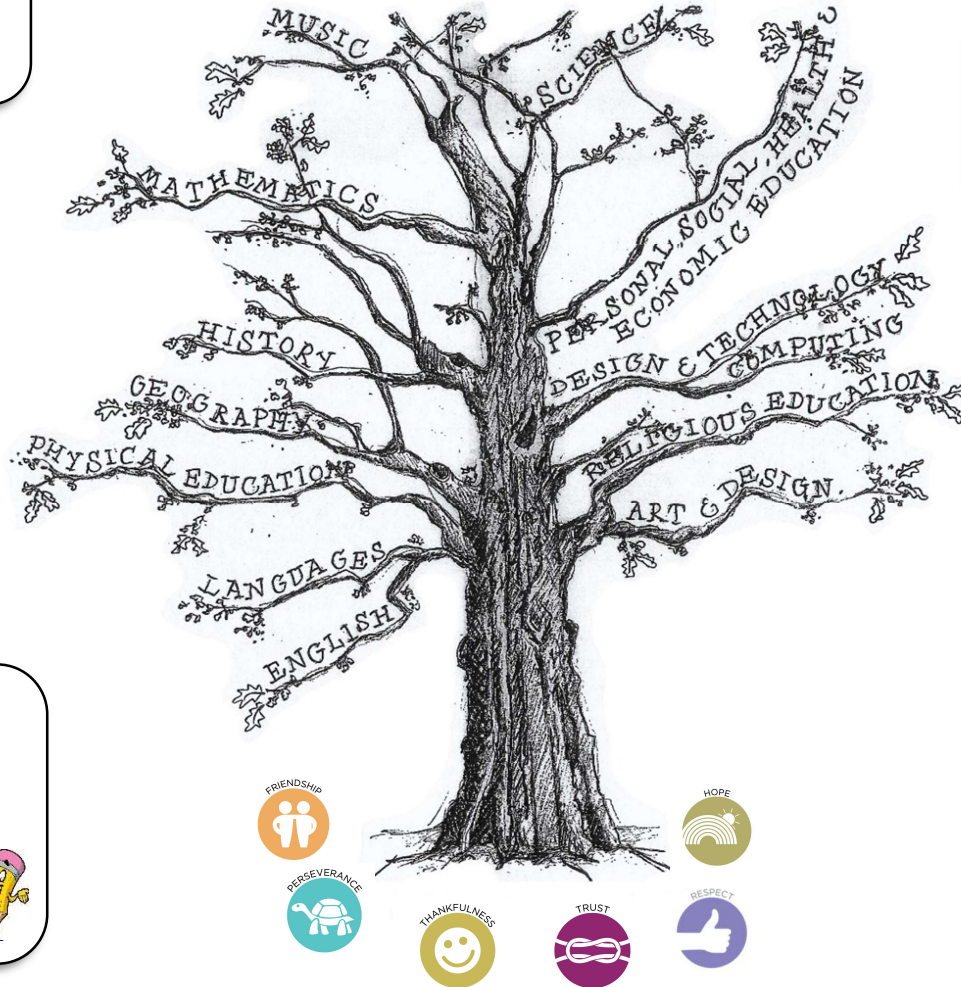


Sketching and drawing buildings  
Cooking a Yorkshire treat  
Designing and creating a playground model

Religious Education



Creation and Harvest Festival  
What does it mean to belong to a faith community?



PSHE



**Rights and Responsibilities**

Creating classroom rules, discussing our responsibilities and our community.

Geography:



Looking at the four countries in the UK.  
Exploring the cities and famous landmarks.

Computing



- \*Online Safety
- \*Navigating around a Chrome Book and login using our own details
- \*Exploring Purple Mash

English



Recount writing about the Summer Holidays.  
Letter writing inviting a class friend to the Pillowcase Picnic.  
Story writing linking to a book from the bookshelf.

Maths

Counting in 2s, 5s and 10s and forwards and backwards to a 100  
Place value. Y1- up to 20. Y2- up to 100.  
Addition and Subtraction  
Multiplication and Division



Music

Songs, rapping and activities linking to Hip Hop Music.



Super Start- Pillowcase Picnic dressed up.

Fabulous Finish- Hunting for landmarks and visiting the sweetshop in Elvington.

P.E

Games- Football skills  
Games- Hockey

